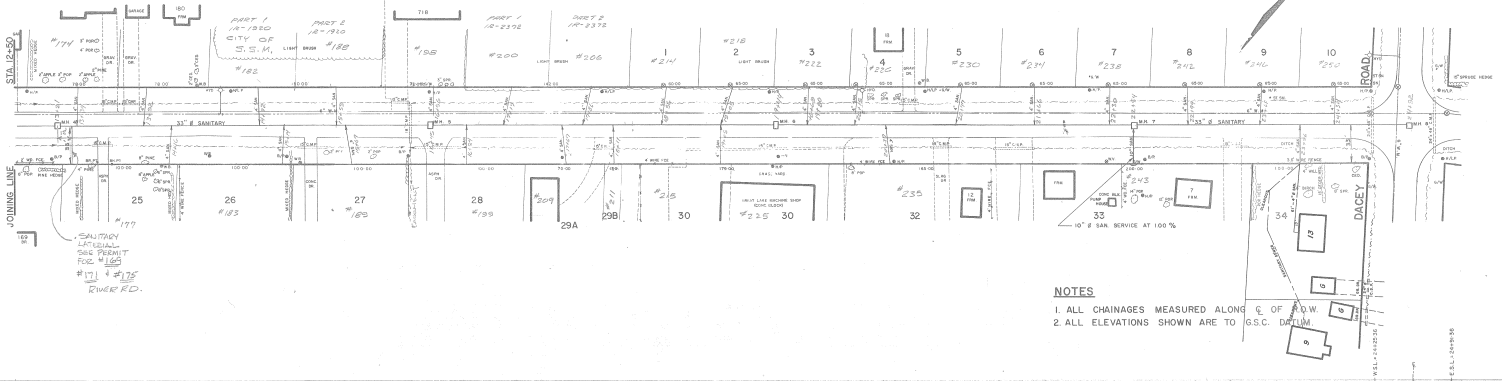
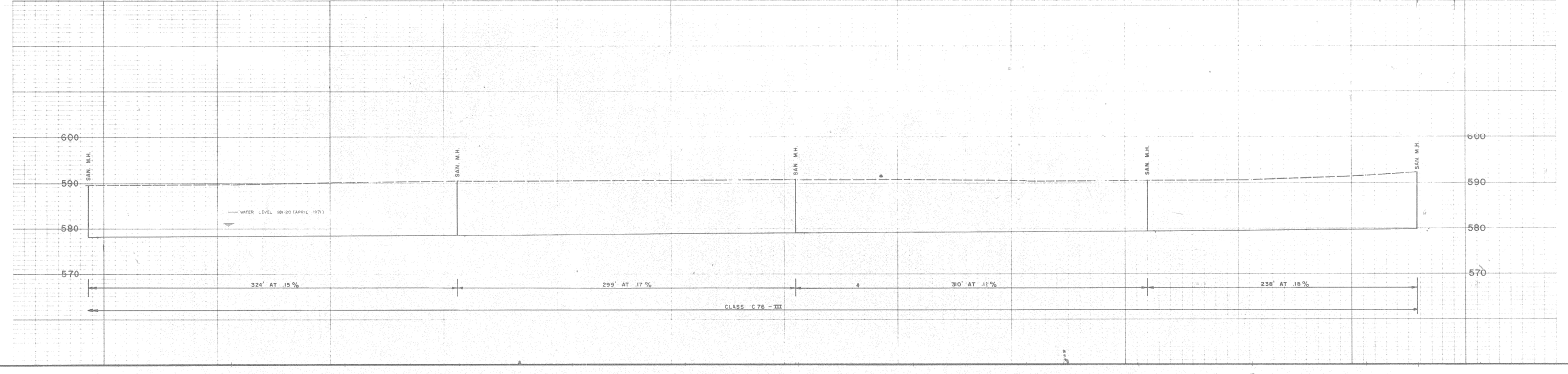


# RIVER ROAD



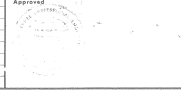
**NOTES**  
 1. ALL CHAINAGES MEASURED ALONG C. OF A.O.W.  
 2. ALL ELEVATIONS SHOWN ARE TO G.S.C. DATUM



Station	Elevation	Grade
12+50	575.5	15%
13+00	575.5	15%
14+00	575.5	15%
15+00	575.5	15%
16+00	575.5	15%
17+00	575.5	15%
18+00	575.5	15%
19+00	575.5	15%
20+00	575.5	15%
21+00	575.5	15%
22+00	575.5	15%
23+00	575.5	15%
24+00	575.5	15%
25+00	575.5	15%
26+00	575.5	15%
27+00	575.5	15%
28+00	575.5	15%
29+00	575.5	15%
30+00	575.5	15%
31+00	575.5	15%
32+00	575.5	15%
33+00	575.5	15%
34+00	575.5	15%
35+00	575.5	15%
36+00	575.5	15%
37+00	575.5	15%
38+00	575.5	15%
39+00	575.5	15%
40+00	575.5	15%
41+00	575.5	15%
42+00	575.5	15%
43+00	575.5	15%
44+00	575.5	15%
45+00	575.5	15%
46+00	575.5	15%
47+00	575.5	15%
48+00	575.5	15%
49+00	575.5	15%
50+00	575.5	15%
51+00	575.5	15%
52+00	575.5	15%
53+00	575.5	15%
54+00	575.5	15%
55+00	575.5	15%
56+00	575.5	15%
57+00	575.5	15%
58+00	575.5	15%
59+00	575.5	15%
60+00	575.5	15%

Note: 1. WATER SERVICES WERE PLACED TO LOTS 1 TO 10 ON THE NORTH SIDE

Revision	Date	Initial
A	REVISED AS CONSTRUCTED	AUG/1972
B	REVISED AS SAN SERVICES AS CONSTRUCTED	FEB/1973



**CITY OF SAULT STE. MARIE**  
**RIVER ROAD**  
 FROM STA. 12+50 TO DACEY ROAD

**Proctor & Redfern Limited**  
 Consulting Engineers  
 Toronto, Ont. Sault Ste. Marie

Scale: Hor. 1"=50', Vert. 1"=10'  
 Date: JUNE, 1972  
 Drawing No. 351-D