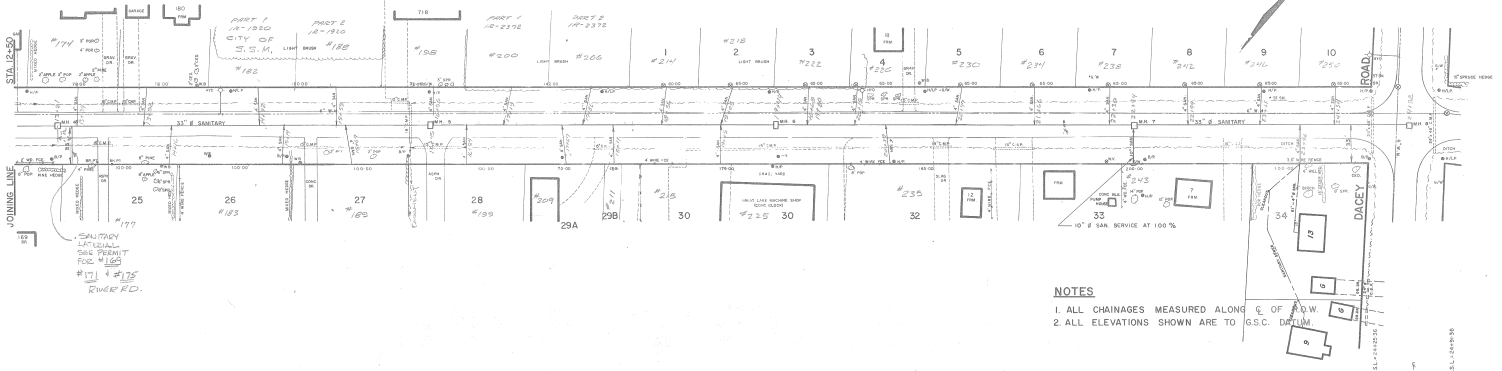
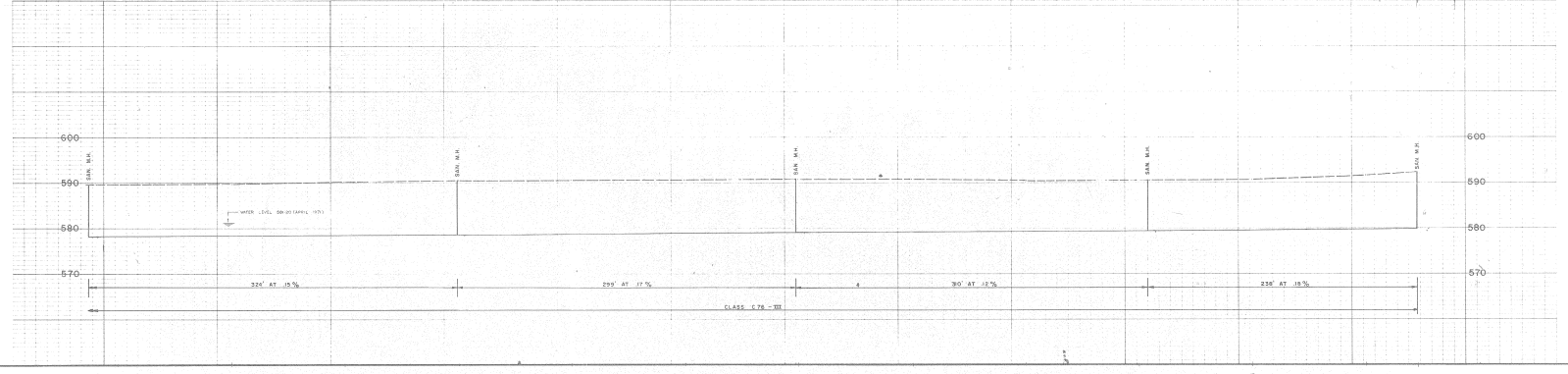


RIVER ROAD



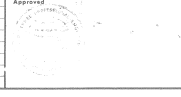
- NOTES**
1. ALL CHAINAGES MEASURED ALONG C. OF A.W.
 2. ALL ELEVATIONS SHOWN ARE TO G.S.C. DATUM



Station	Elevation	Grade
12+50	575.5	2.2% AT 15.5%
14+00	580.0	2.2% AT 17.5%
15+50	585.0	2.2% AT 17.5%
17+00	590.0	3.0% AT 18.5%
18+50	595.0	3.0% AT 18.5%
20+00	598.0	2.2% AT 19.5%
21+50	600.0	2.2% AT 19.5%
22+00	600.0	

Notes: 1. WATER SERVICES WERE PLACED TO LOTS 1 TO 10 ON THE NORTH SIDE

Revision	Date	Initial
A	REVISED AS CONSTRUCTED	AUG/1972 J.P.H.
B	REVISED AS SAN SERVICES AS CONSTRUCTED	FEB/1973 D.S.L.



CITY OF SAULT STE. MARIE
RIVER ROAD
 FROM STA. 12+50 TO DACEY ROAD

Proctor & Redfern Limited
 Consulting Engineers
 Toronto Sault Ste. Marie

Scale: Hor. 1"=40' Vert. 1"=10'
 Date: JUNE, 1972
 Drawing No. **351-D**